



*Athos*

# Athos



ATHOS MACCHINA SEMI-AUTOMATICA PER L'APPLICAZIONE DI QUALSIASI TIPO DI NASTRO BI-ADESIVO, ACRILICO, FOAM, PVC E TRANSFER SU OGNI TIPO DI SUPPORTO CARTA, CARTONCINO, ONDULATO, PVC, PLASTICA, ACRILICO E LEGNO.

La Athos è una macchina studiata per l'applicazione in modo automatico del nastro bi-adesivo con alimentazione manuale. E' composta da due applicatori "RAP", da un gruppo rotelle su rullo di lancio in uscita su un tavolo raccogliatore.






SEMI-AUTOMATIC MACHINE FOR THE APPLICATION OF ANY TYPE OF DOUBLE-SIDED TAPE, ACRYLIC, FOAM, PVC AND TRANSFER ON ANY KIND OF PAPER SUPPORT, CARDBOARD, CORRUGATED, PVC, PLASTIC, ACRYLIC AND WOOD.

The Athos machine has been designed to apply double-sided tape in automatic way with manual feeding. Athos is composed of two applicators "RAP", a group of wheels on the output roller and a delivery table.





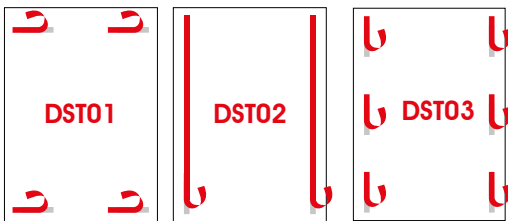
 Applicatore nastro bi-adesivo "RAP"  
 *Applicator of double-sided tape "RAP"*

 La macchina è predisposta per la lavorazione con n. 4 RAP

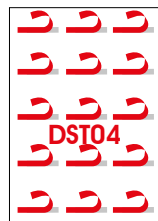
 *The machine is designed to work with N.4 RAP*

 **Prodotti realizzabili con la macchina Athos**  
 ***Products achievable with the Athos machine***

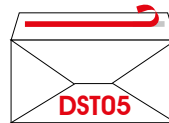
Poster  
*Posters*



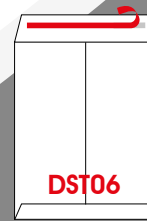
Campionari tessuti  
*Tissue samples*



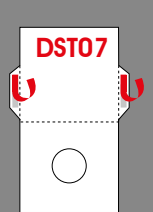
Buste  
*Envelopes*



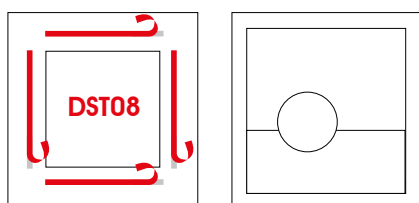
Sacchetti  
*Bags*



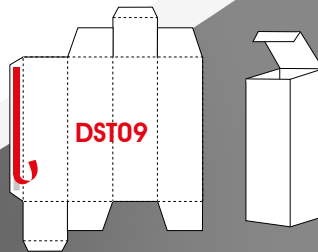
Bustine CD  
*CD Envelopes*



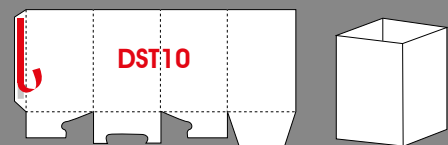
Portafoto  
*Picture frames*



Scatole di cartone  
*Cardboard boxes*



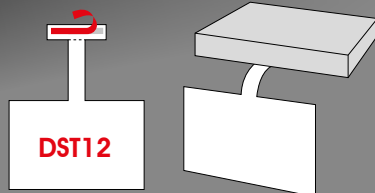
Scatole di propilene  
*Propylene boxes*



Cartoline  
*Postcards*



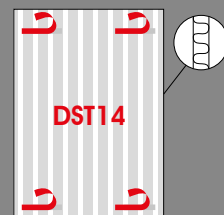
Pendolini  
*Pendulums*



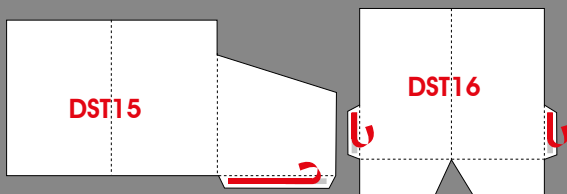
Calendari  
*Calendars*



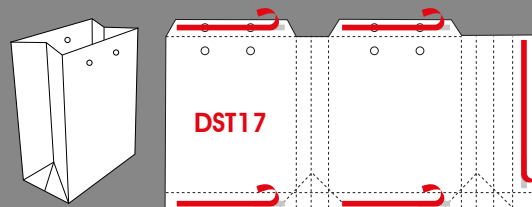
Cartone ondulato  
*Corrugated cardboard*



Cartelline  
*Folders*



Shopper  
*Shoppers*

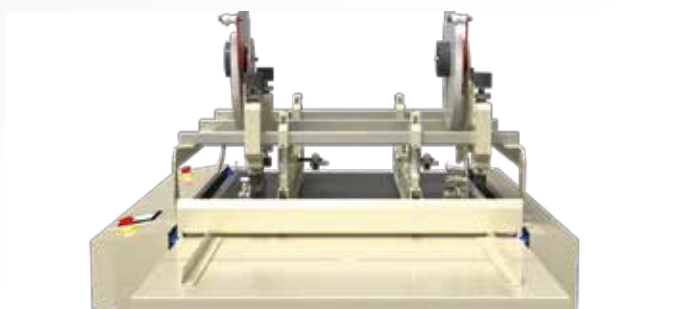


**Caratteristiche tecniche Athos** 

Formato di introduzione	Max: 800 x 1050 mm Min: 100 x 100 mm
Grammatura min	80 g/m <sup>2</sup>
Grammatura max	800 g/m <sup>2</sup> , tutti i tipi di cartoncino ondulato: A,B,C,E,F,N,EB,EF e PVC
Materiale rigido	plastica, acrilico e legno - da 1mm a 10 mm
Velocità meccanica	70 m/min
N. di applicazioni	Da 1 a 5
Allacciamento elettrico	380 V
Potenza di allacciamento	2 Kw
Dimensioni di ingombro	2710 x 1265 mm h 1590 mm
Lunghezza max. nastro applicabile	999 mm
Lunghezza min. di nastro applicabile	35 mm
Distanza min. tra una applicazione e l'altra in linea	25 mm
Distanza min. del nastro dal margine foglio	5 mm
Distanza min. tra una applicazione e l'altra in parallelo	0 mm

**Specifiche tecniche Applicatore Rap** 

Larghezza nastro min-max	Da 9mm-25mm Standard, a richiesta 50mm o 100 mm
Diam. esterno rotolo	480 mm
Diam. interno rotolo	76 mm
Alimentazione	Elettropneumatica
Velocità max. di produzione	70 m/min



 Mettifoglio manuale  
 *Manual Feeder*



**Technical characteristics of the Athos machine** 

<i>Format machine introduction</i>	Max: 800 x 1050 mm Min: 100 x 100 mm
<i>Min paper weight</i>	80 g/m <sup>2</sup>
<i>Max paper weight</i>	800 g/m <sup>2</sup> , all corrugated flute type: A,B,C,E,F,N, EB,EF and PVC
<i>Rigid materials</i>	plastic, acrylic and wood - from 1 mm up to 10 mm
<i>Mechanical Speed</i>	70 m/min
<i>N. of applications</i>	From 1 to 5
<i>Electrical connection</i>	380 V
<i>Power connection</i>	2 Kw
<i>Machine dimensions</i>	2710 x 1265 mm h 1590 mm
<i>Max. applicable tape length</i>	999 mm
<i>Min. applicable tape length</i>	35 mm
<i>Min. distance between one application and the next in line</i>	25 mm
<i>Min. distance of the tape from the edge of the paper</i>	5 mm
<i>Min. distance between one application and the next in parallel</i>	0 mm

**Technical characteristics Rap** 

<i>Tape width (Min-Max)</i>	From 9mm-25mm and on request 50mm or 100 mm
<i>Max outer diameter roll tape</i>	480 mm
<i>Internal diameter roll tape</i>	76 mm
<i>Power supply</i>	Electro Pneumatic
<i>Max Production speed</i>	70 m/min



 Dettaglio del gruppo rotelle di pressione su rullo  
 *Detail of the pressure rollers roll group*

